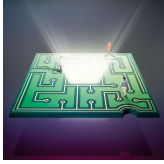


Features



The Search for a New Machine

With the end of Moore's law in sight, chip manufacturers are spending billions to develop novel computing technologies

John Pavlus | May 1, 2015 | 6

PLUS: [Computing after Moore's Law \[Slide Show\]](#)[Computing after Moore's Law](#)



Waves of Destruction

Towering seas can smash sea ice, with far-flung effects on climate and nature

Mark Harris | May 1, 2015 | 1

PLUS: [Arctic Waves Pound Vanishing Ice \[Video\]](#)



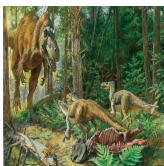
The Glue That Binds Us

Physicists have known for decades that particles called gluons keep protons and neutrons intact—and thereby hold the universe together. Yet the details of how gluons function remain surprisingly mysterious

Rolf Ent, Thomas Ullrich and Raju

Venugopalan | May 1, 2015 | 8

PLUS: [Subatomic Particles over Time: Graphics from the Archive, 1952 to 2015](#)



Rise of the *Tyrannosaurs*

New fossils put *T. rex* in its place

Stephen Brusatte | May 1, 2015 |

PLUS: [Meet the New Tyrannosaurs](#)

[\[Video\]](#)



Cellular Small Talk

Neighboring cells exchange molecular information via channels that directly connect them. Disruption of this signaling system can lead to disorders ranging from hearing loss to

Departments

50, 100 & 150 YEARS AGO

50, 100 & 150 Years Ago

PLUS: [The Realities of War, 1915 \[Slide Show\]](#)

ADVANCES

Popcorn Physics 101

The Culture of Germination

Small Fry

Right on Schedule

Tiny Toilets

The Lens Descends

Switching Sides

The Retiarus Bot

Teen Dispirit

PLUS: [Drone-Snagging Drones, Popcorn Physics and More: *Scientific American's* May Issue](#)

May Flowers Bring Leaf Showers

Quick Hits

Global Role Model

ANTI GRAVITY

Have a Seat

FORUM

Time to Go to Europa

FROM THE EDITOR

Rise of the Tyrants

heart disease

Dale W. Laird, Paul D. Lampe and Ross G.

Johnson | May 1, 2015 |

PLUS: [Watch Information Flow between Neighboring Cells \[Video and Animation\]](#)



Lifting the Curse of Alzheimer's

A cluster of families in Colombia who carry a rare genetic mutation that causes the disease have become a focus of the search for a treatment

Gary Stix | May 1, 2015 |

PLUS: [Treating Alzheimer's before It Happens](#)



Night Watch

A satellite sensor that can see in the dark is revealing new information for meteorologists, firefighters, search teams and researchers worldwide

Steven D. Miller | May 1, 2015 |

PLUS: [Satellite Sensor Reveals Earth's Nocturnal Secrets](#)

GRAPHIC SCIENCE

This Land is My Land

PLUS: [China, UK, And US At Center Of Global Trade In Land Ownership Network](#)

LETTERS TO THE EDITORS

Letters

RECOMMENDED

Birth of a Theorem

PLUS: [The Truth Behind the Math: The Surprising Path of a Theorem \[Q&A\]](#)

Biophilia

PLUS: [May Book Reviews Roundup](#)

How to Clone a Mammoth

Invisible

SKEPTIC

Terrorism as Self-Help Justice

TECHNOFILES

Truth in Digital Advertising

PLUS: [Advice to Digital-Age Advertisers: Shake It Up](#)

THE SCIENCE AGENDA

Wooing the Fence-sitters

THE SCIENCE OF HEALTH

Why Girls are Starting Puberty Early
