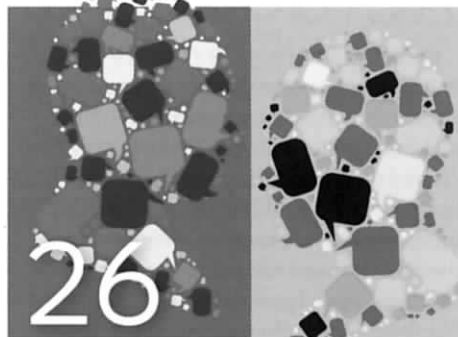
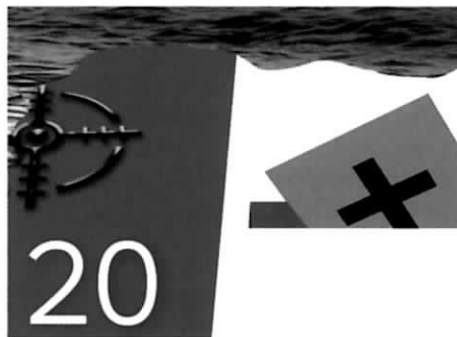
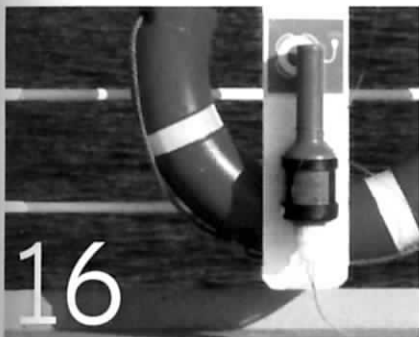


contents

March 2015, Vol 49, No 553



Features

16 Cruise ship safety

Momentum to enact new cruise safety measures shows no signs of abating

20 Security and piracy

Kidnappings fears in west Africa, increasing violence in Asia and 2014 piracy statistics

26 Training and education

Cultural misunderstandings among crew can have disastrous consequences

on the cover

MS Safety at Sea
Stranded in the Solent

Car carrier *Hoegh Osaka* spent nearly three weeks grounded in the Solent channel after the master and pilot were forced to take emergency action when the ship began listing on 3 January. **On page 7** we look at what happened and the 'team effort' that brought the vessel back to port

Regulars

4 Our say

Refugees and their rescue

5 Your say

Reader reaction to recent stories

6 News

Cjemfjord accident linked to cargo shift; *Hoegh Osaka* towed; Call for data sharing; Hazmat reports go electronic

12 Security news

Sekimizu slams migrant ship sales; abandoned ships alarm in Nigeria; Indonesia remains hijack hotspot

14 Training news

IMO targets education; union condemns UK training budget; Istanbul University's new bridge simulator

32 Security insight

Shipping risks escalate in Libya

33 Regulation insight

All secure for the STCW Code

34 Safety briefing

How surveyors became trapped in a ballast tank

36 MARS

A lubrication defect causes big problems; gangway guidance

39 Products

Videotel launches the Enclosed Space Management System; hooked on safety equipment that can monitor itself

42 View astern

The Panama Canal – in Egypt?

For further in-depth coverage go to
sea-web.com/insight



DAICON

Professional Rescue Equipment for SAR Vessels

- Rescue Scoop:** Crane- or boom-operated rescue net for recovering able or disabled persons
- Rescue Dummy:** Realistic rescue dummy of human proportions (1,8m tall, 85kg max weight)
- Rescue Frame:** Manual recovery system for gentle, horizontal rescue of casualties

E-mail: Rescue@daicon.no | www.daicon.no