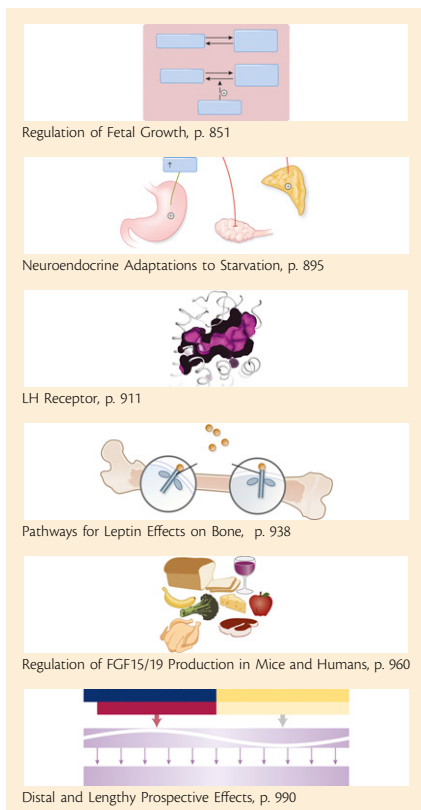


contents

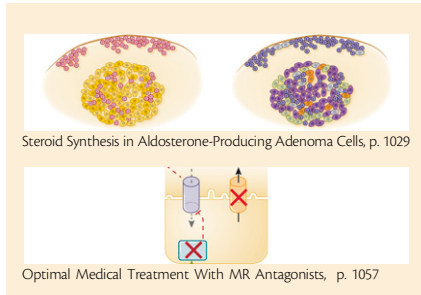


REVIEWS

- 851 **Children Born Small for Gestational Age: Differential Diagnosis, Molecular Genetic Evaluation, and Implications**
 Martijn J. J. Finken, Manouk van der Steen, Carolina C. J. Smeets, Marie J. E. Walenkamp, Christiaan de Bruin, Anita C. S. Hokken-Koelega, and Jan M. Wit
- 895 **Effects of Anorexia Nervosa on Bone Metabolism**
 Pouneh K. Fazeli and Anne Klibanski
- 911 **Gonadotropins and Their Analogs: Current and Potential Clinical Applications**
 Ross C. Anderson, Claire L. Newton, Richard A. Anderson, and Robert P. Millar
- 938 **Effects of Leptin on the Skeleton**
 Ian R. Reid, Paul A. Baldock, and Jillian Cornish
- 960 **Fibroblast Growth Factor 15/19: From Basic Functions to Therapeutic Perspectives**
 Emmanuel Somm and François R. Jornayvaz
- 990 **Melatonin as a Hormone: New Physiological and Clinical Insights**
 José Cipolla-Neto and Fernanda Gaspar do Amaral

ENDOCRINE REVIEWS (Print ISSN 0163-769X; Online ISSN 1945-7189; USPS 558-570) is an official journal of the Endocrine Society, published six times per year in February, April, June, August, October, and December by the Endocrine Society, 2055 L Street NW, Suite 600, Washington, DC 20036. Periodicals postage paid at Washington, DC, and at additional mailing offices. Printed in the USA. POSTMASTER: Send address changes to *Endocrine Reviews*, 2055 L Street NW, Suite 600, Washington, DC 20036.

Printed on acid-free paper. Table of Contents and abstracts for each issue available on the issue mail date on the Endocrine Society home page at <https://academic.oup.com/edrv>. 2018 Subscription information is located on the Resources page. Copyright © 2018 Endocrine Society.

**Medical Illustrators:**

Kimberly Battista, MA

Jane Whitney, BScAAM CMI

1029 The Biology of Normal *Zona Glomerulosa* and Aldosterone-Producing Adenoma: Pathological Implications

Teresa M. Seccia, Brasilina Caroccia, Elise P. Gomez-Sanchez, Celso E. Gomez-Sanchez, and Gian Paolo Rossi

1057 The Expanding Spectrum of Primary Aldosteronism: Implications for Diagnosis, Pathogenesis, and Treatment

Anand Vaidya, Paolo Mulatero, Rene Baudrand, and Gail K. Adler

ENDOCRINE SOCIETY1A **Society page**3A **Resources page**9A **Editorial Board**10A **Forthcoming Articles**11A **List of Article Types**3B ***Endocrinology* Table of Contents Snapshot**5B ***JCEM* Table of Contents Snapshot**6B ***Journal of the Endocrine Society* Forthcoming Articles**